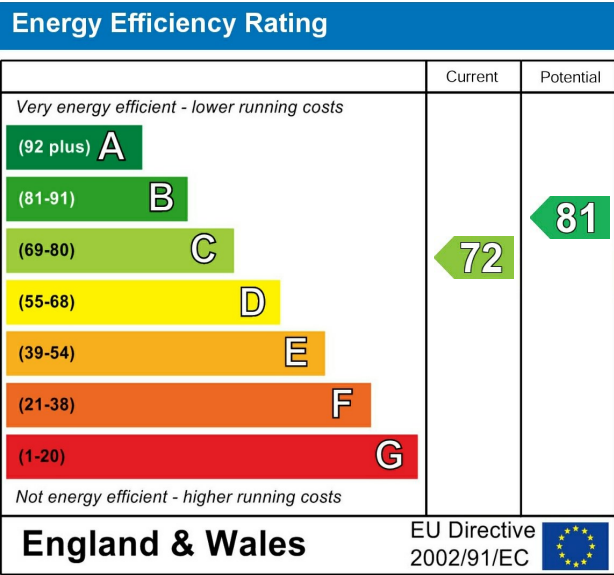


21, Shaw Drive, Walton-On-Thames, KT12 2LP



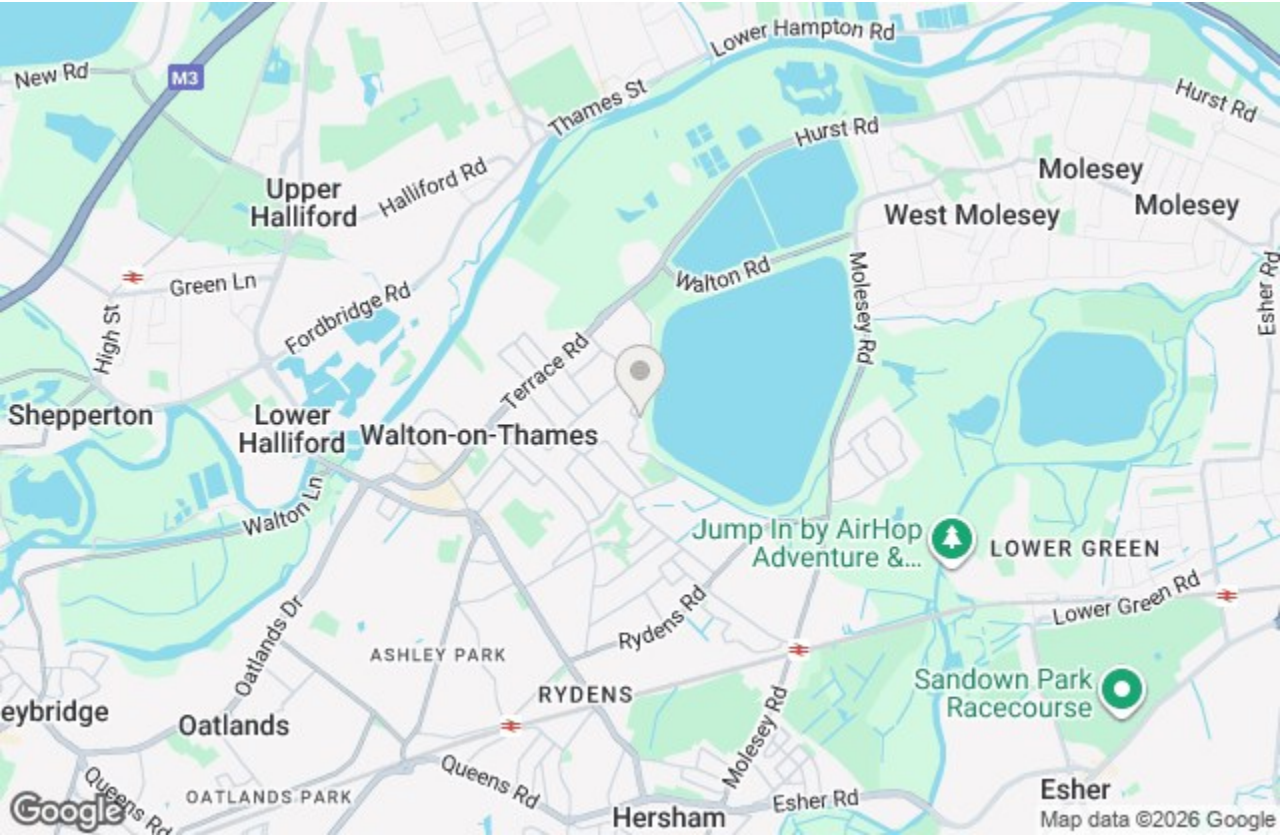
£297,500 Leasehold

Located in the popular Shaw Drive development in Walton-On-Thames is this delightful purpose-built first floor apartment. With two well-proportioned bedrooms, this residence is ideal for small families, couples, or individuals seeking a serene retreat.

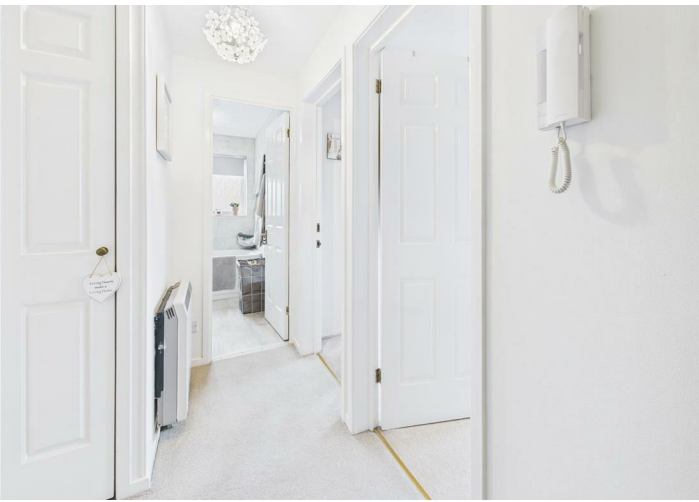
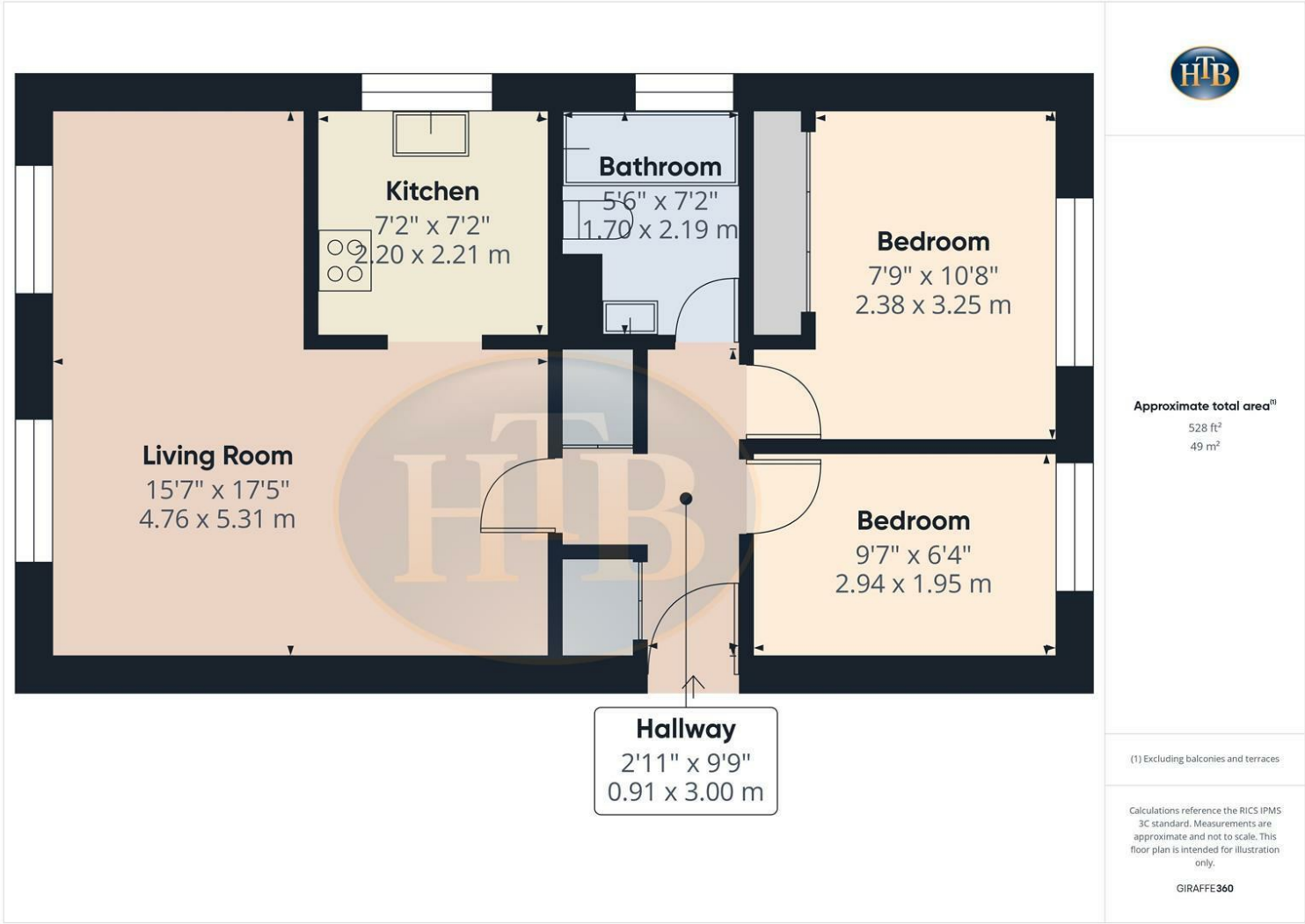
Upon entering, you are welcomed by a spacious L-shaped lounge/dining room, providing an inviting space for relaxation and entertaining. The large windows allow natural light to flood the room, creating a warm and airy atmosphere. The modern kitchen is equipped with a fitted oven and hob along with space for the usual appliances making it a joy for any home cook to prepare meals.

The apartment features a contemporary bathroom, complete with a shower over the bath, ensuring convenience and style. Externally, residents can enjoy the well-maintained communal gardens, perfect for enjoying a sunny afternoon.

For those with vehicles, the property boasts two allocated parking spaces, a valuable asset in this desirable location. Shaw Drive is conveniently situated, offering easy access to local amenities, transport links, and the picturesque riverside, making it an excellent choice for those looking to embrace the vibrant lifestyle of Walton-On-Thames.



Shaw Drive, Walton-On-Thames, KT12 2LP



- TWO BEDROOMS
- TWO ALLOCATED PARKING SPACES
- GREAT SIZE L SHAPE LOUNGE DINING ROOM
- POPULAR LOCATION
- EPC C
- FIRST FLOOR APARTMENT
- 964 YEAR LEASE WITH NO GROUND RENT
- COMMUNAL GARDENS
- MODERN KITCHEN & BATHROOM
- ELMBRIDGE COUNCIL TAX BAND D

This plan is a representation of the property and measurements, where given, are approximate. None of the fixtures and fittings have been tested by us. These details are thought to be materially correct but we cannot guarantee there are no error and emissions and they do not form part of any contract